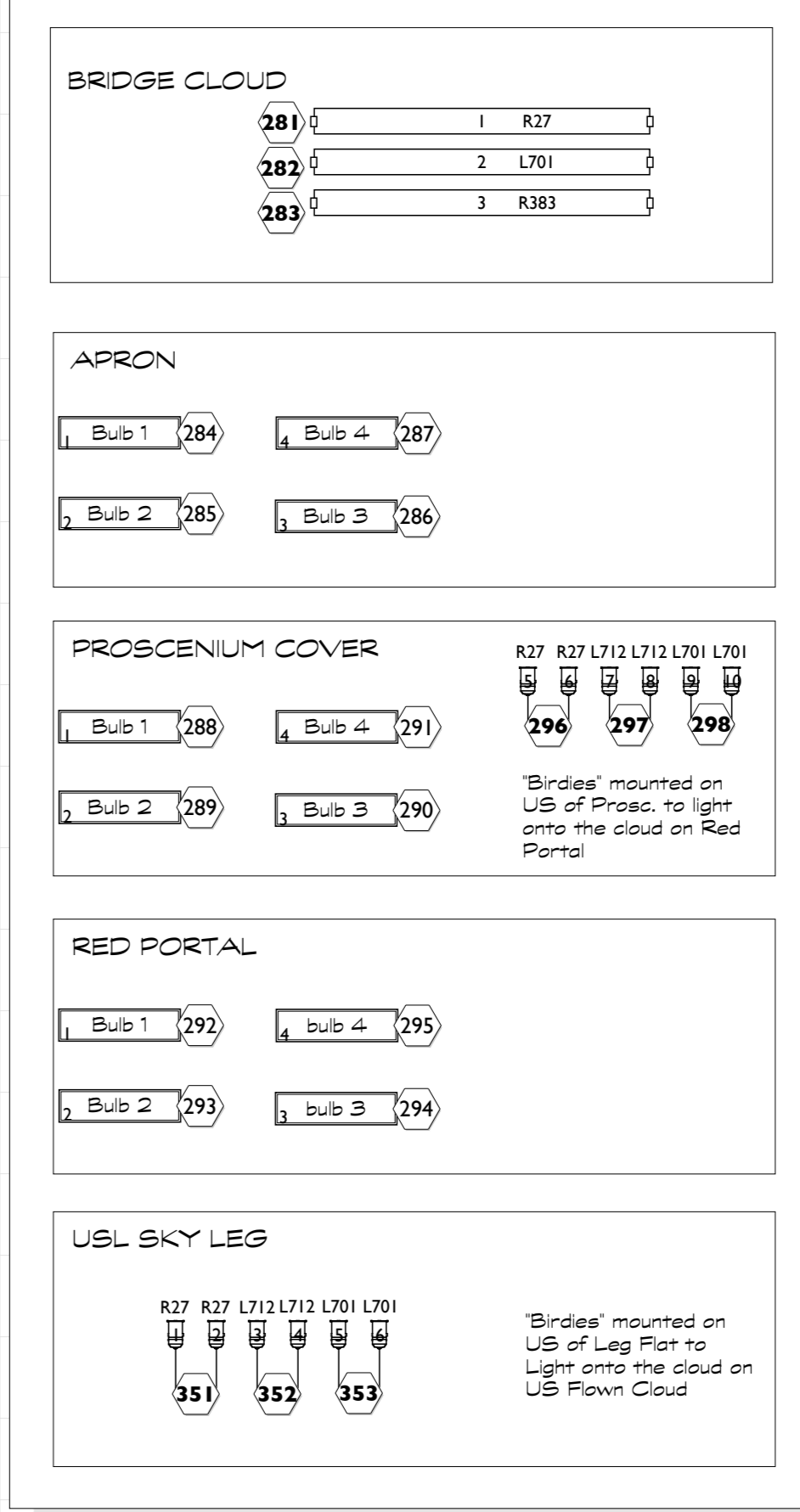
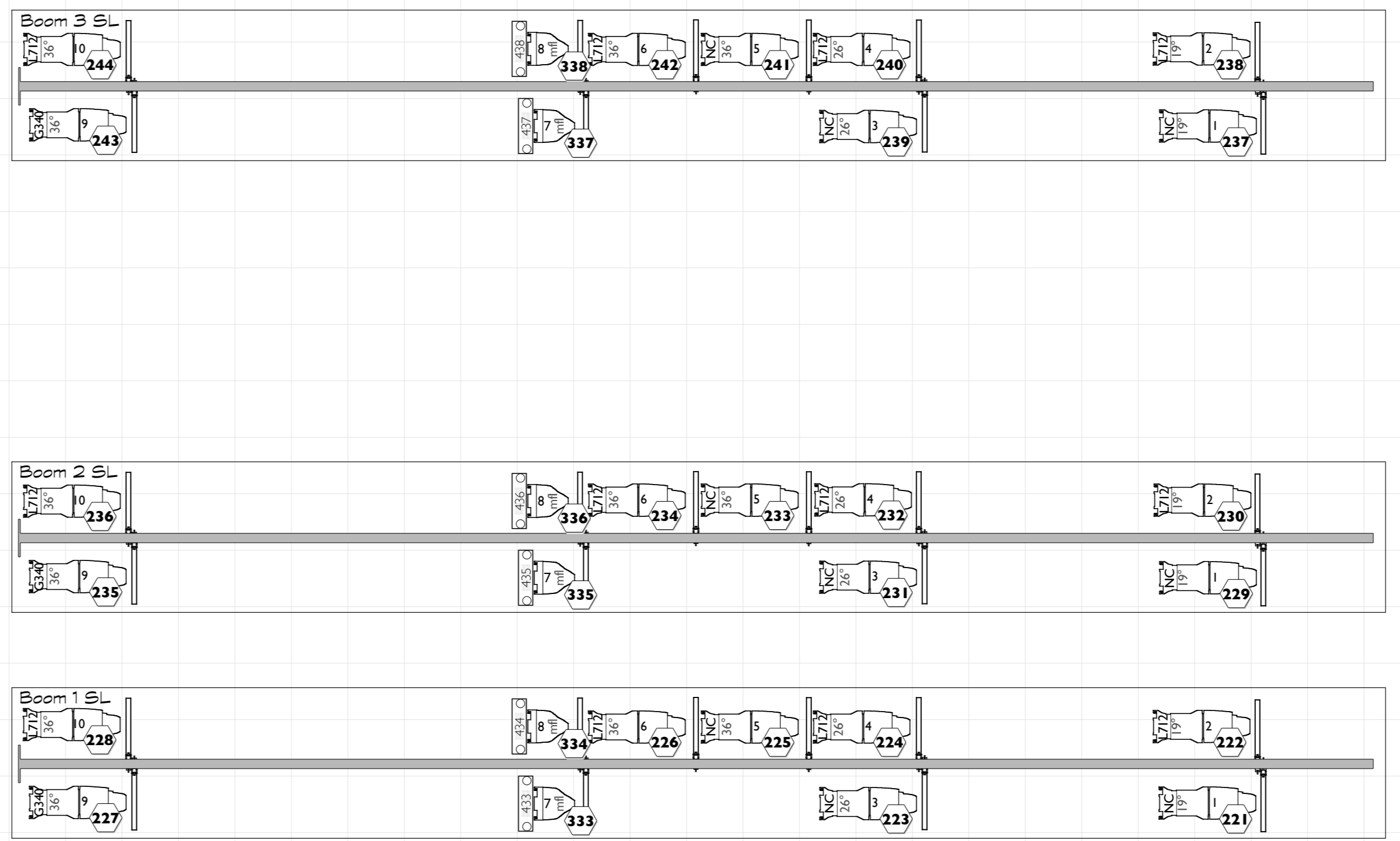
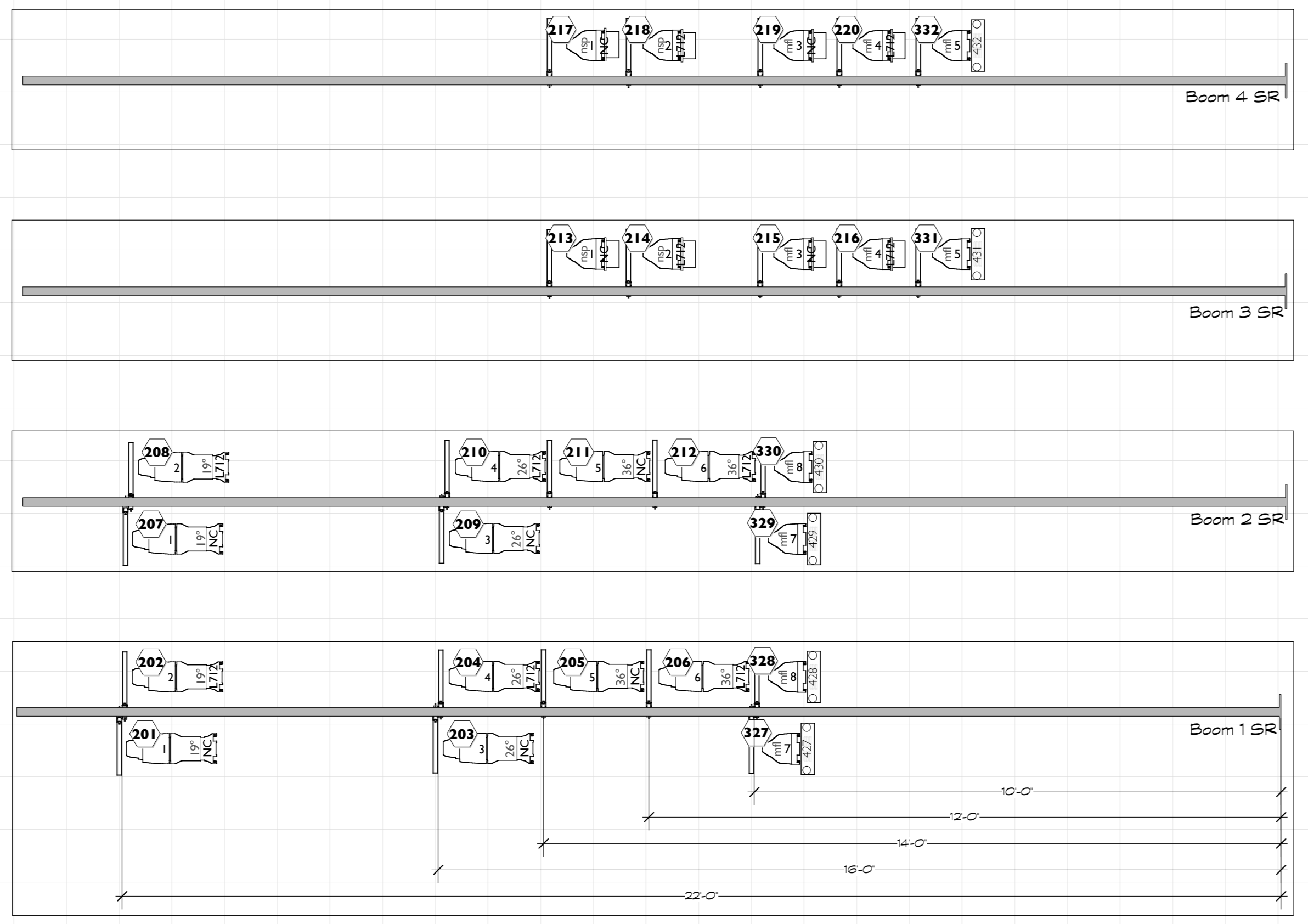


- Instruments**
- Source 4 36°
 - Source 4 19°
 - Source 4 26°
 - S4 PAR MFL
 - S4 PAR NSP
 - Source 4 50°
 - Sealcon Pacific 20°
 - Aurora T3 Strip
 - Alman B T3 Strip
 - LEE Ministrip 3 Circuit
 - LEE dimmable fluorescent
 - Par 20 'Bride'
- Accessories**
- Wybron Fore-runner Scroller
 - 6.25' Donut
 - In
 - 7.5' Short Top Hat
- Legend**
- Unit Number
 - Channel



LOVE'S LABOUR'S LOST
by
William Shakespeare

Director:	Michael Kahn	THE SHAKESPEARE THEATRE COMPANY
Designer:	Ralf Funicello	THE LANSBURGH THEATRE
Drawing:	ONSTAGE BOOMS AND OTHER FIXTURES	
Scale:	1/2" TO 1'-0"	1st Draft
Date:	21st APRIL 2006	Drawn by: mark doubleday

MARK DOUBLEDAY Lighting Designer
2 Bath Cottages, Tubwell Lane, Maynards Green, Nr. Heathfield, East Sussex. N21 0BY 01435 833993/07941 02254-mark.doubleday@mac.com